

JDCC

15 November 2023



**GREATER CAMBRIDGE**  
SHARED PLANNING

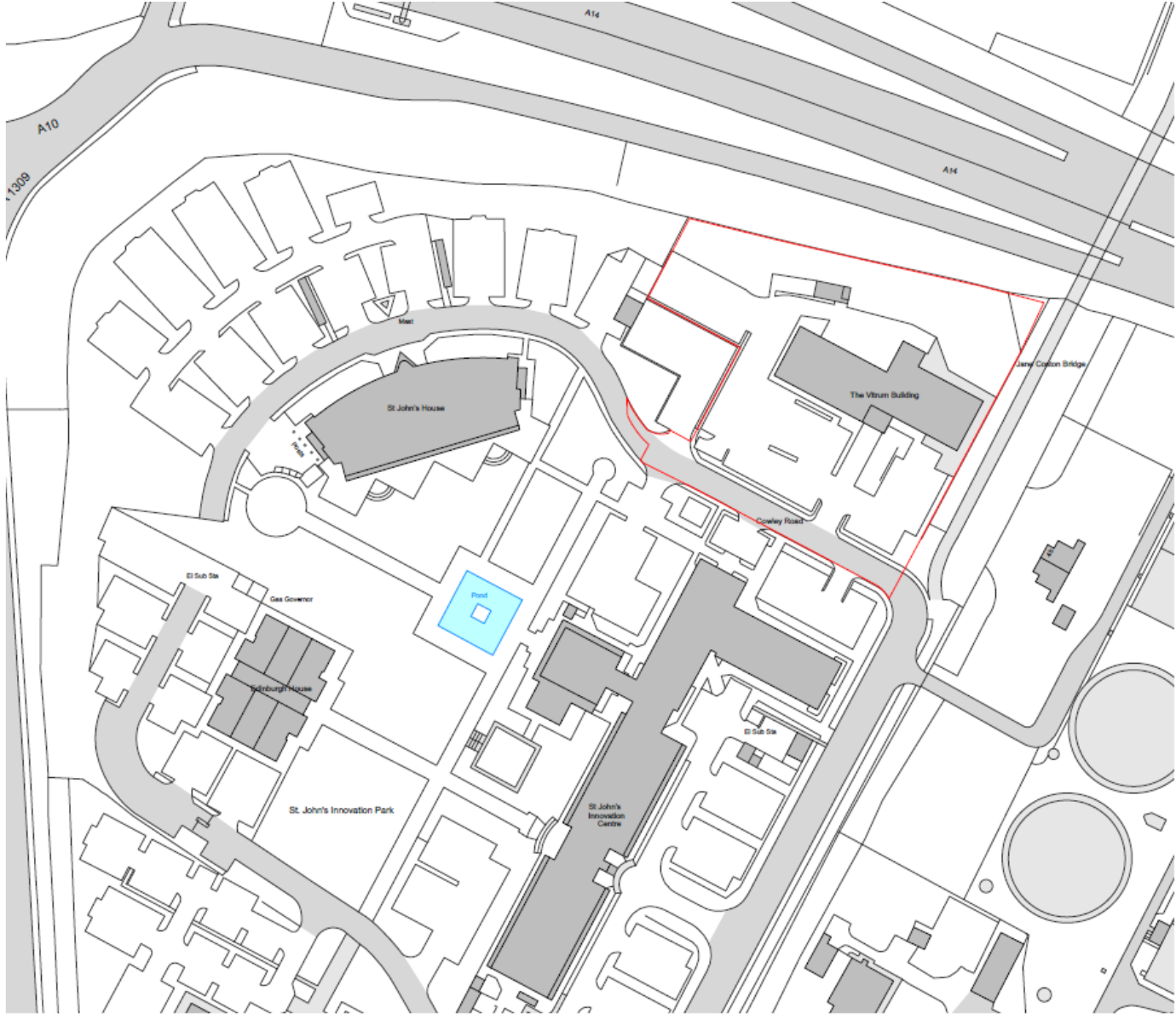
23/01487/FUL & 23/01509/FUL  
Vitrum Building, St Johns Innovation Park,  
Cowley Road, Cambridge

Page 2

Demolition of existing buildings and substructures and the erection of a Research and Development building (use Class E) with basement levels for car and cycle parking and building services, and associated landscaping, cycle parking, infrastructure works and plant.

# Site Location Plan

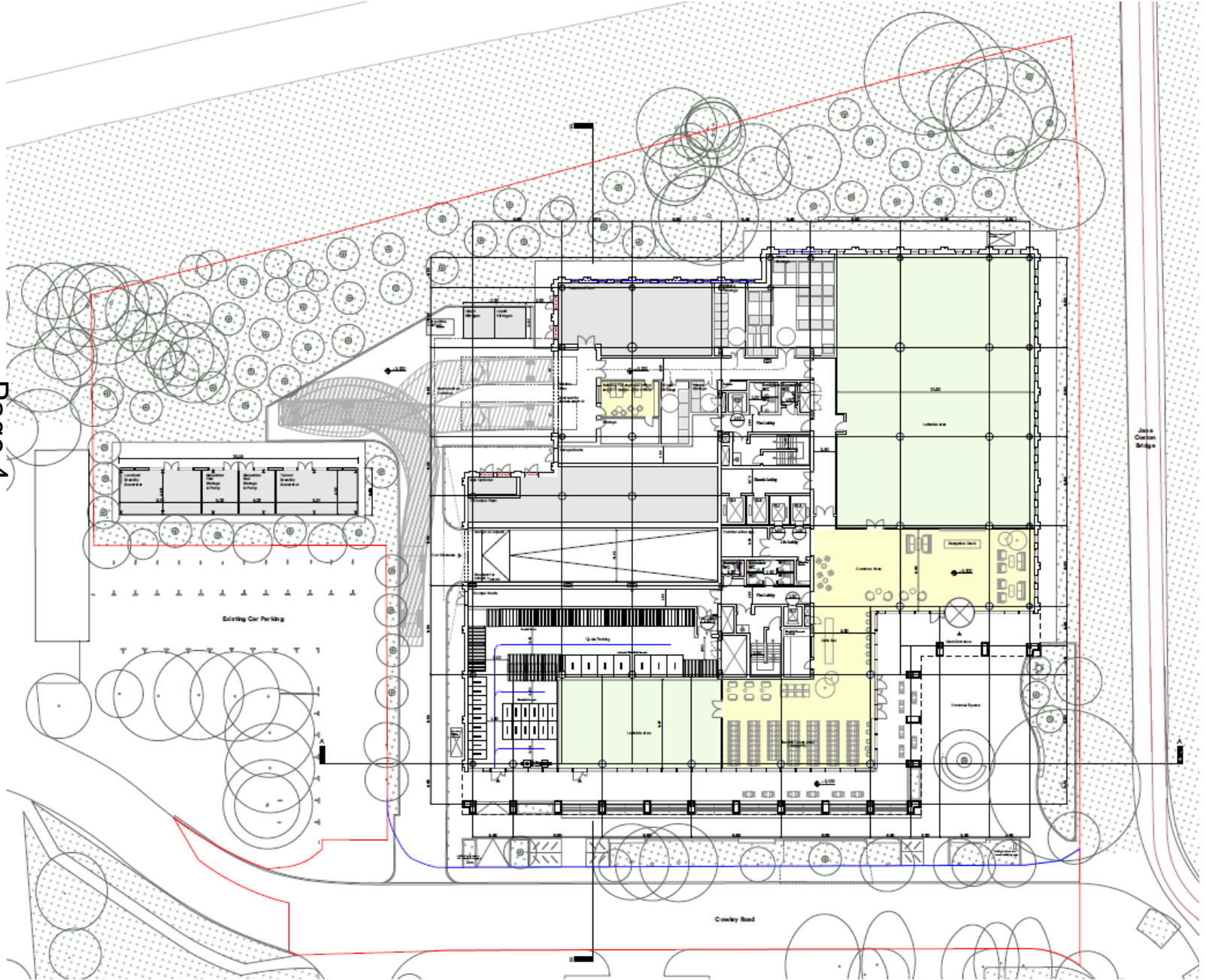
Page 3



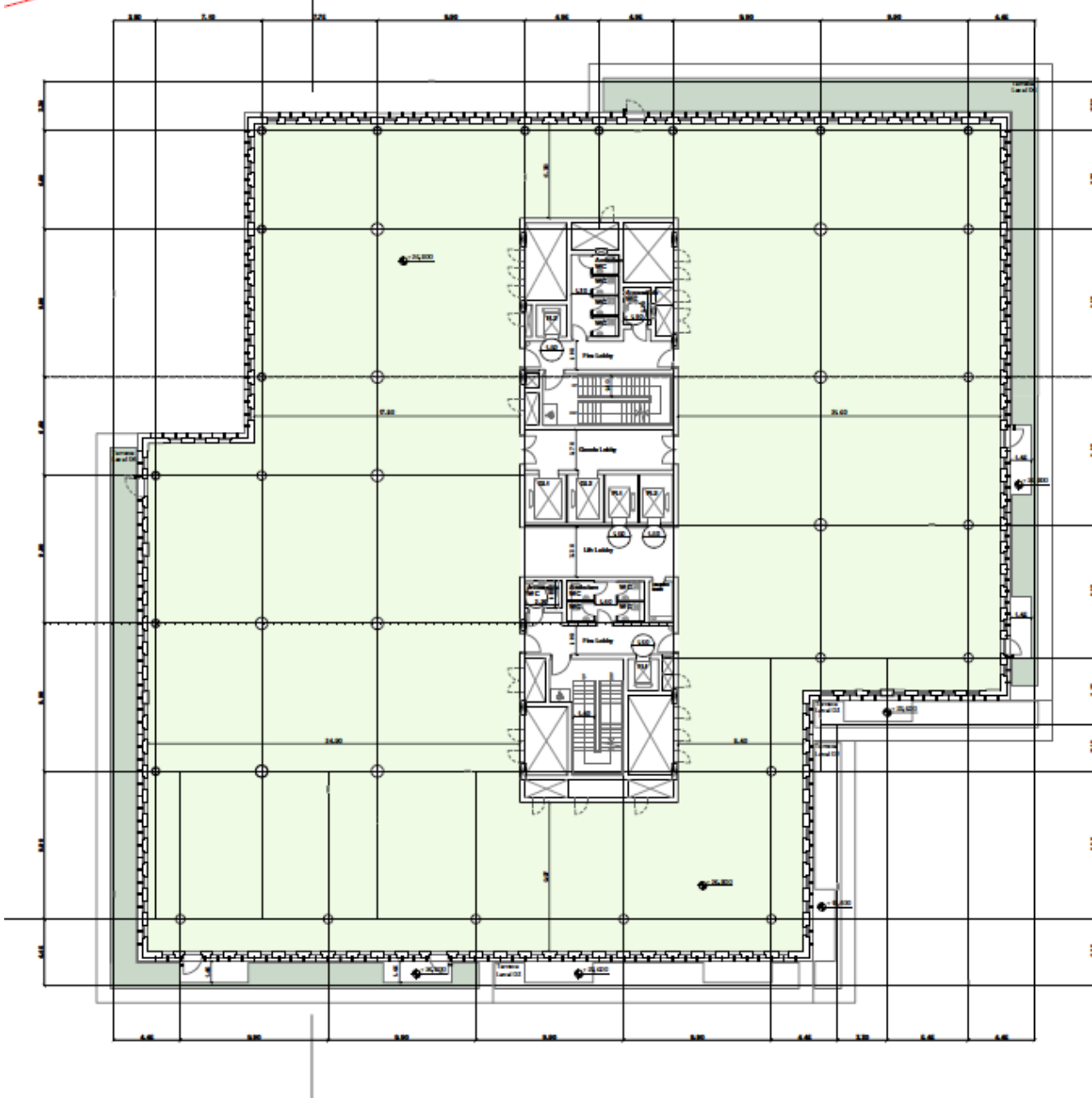
# Proposed Site Plan



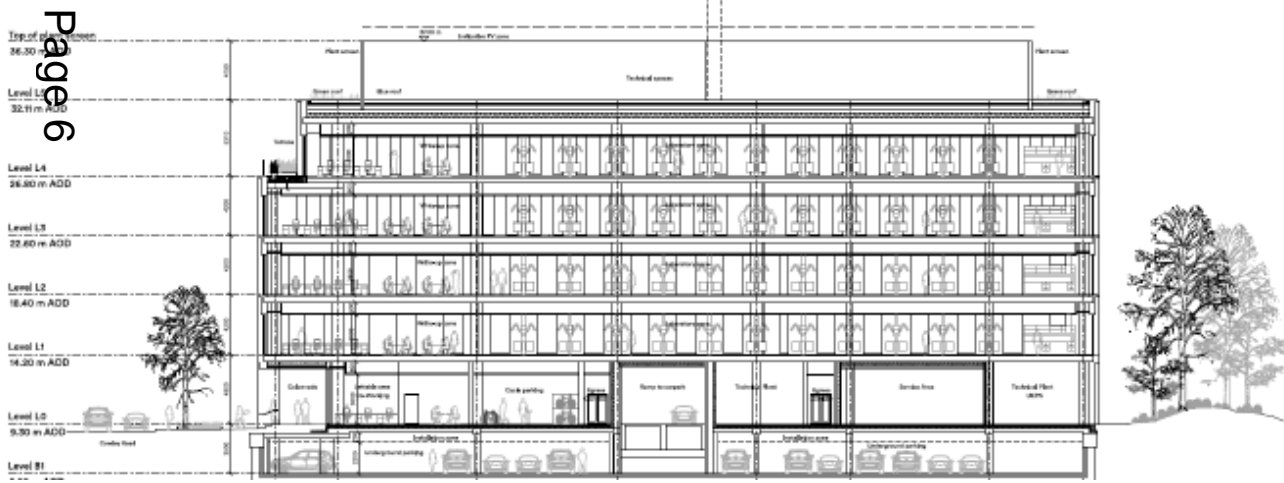
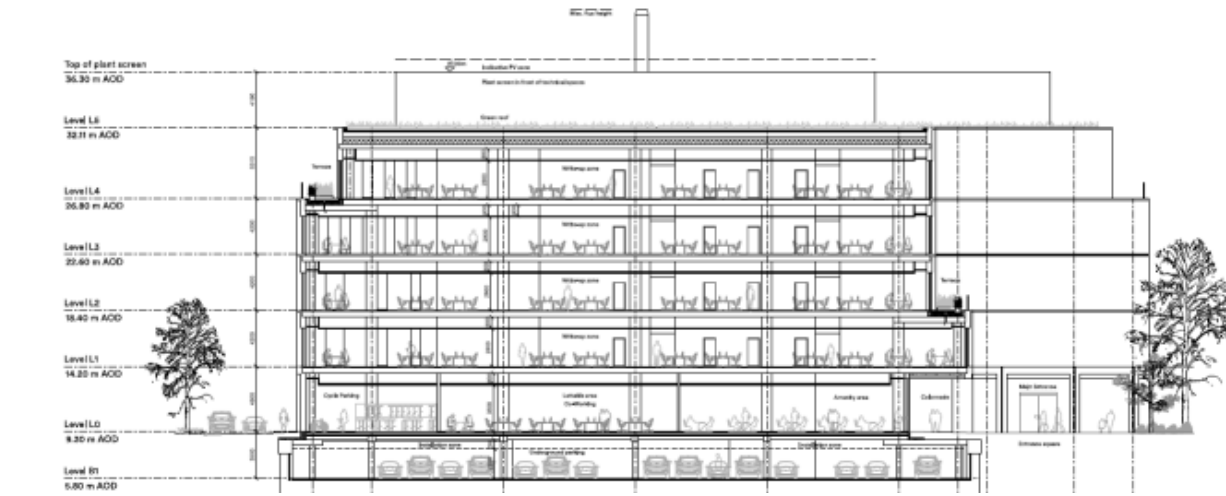
Page 4



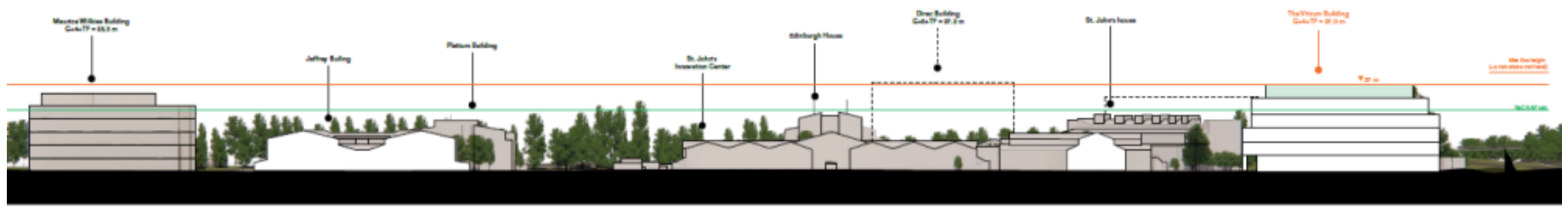
# Upper floor plan (level 4)



# Site sections



Page 6





# North West and North East Elevations

Page 7



# South West and South East Elevations

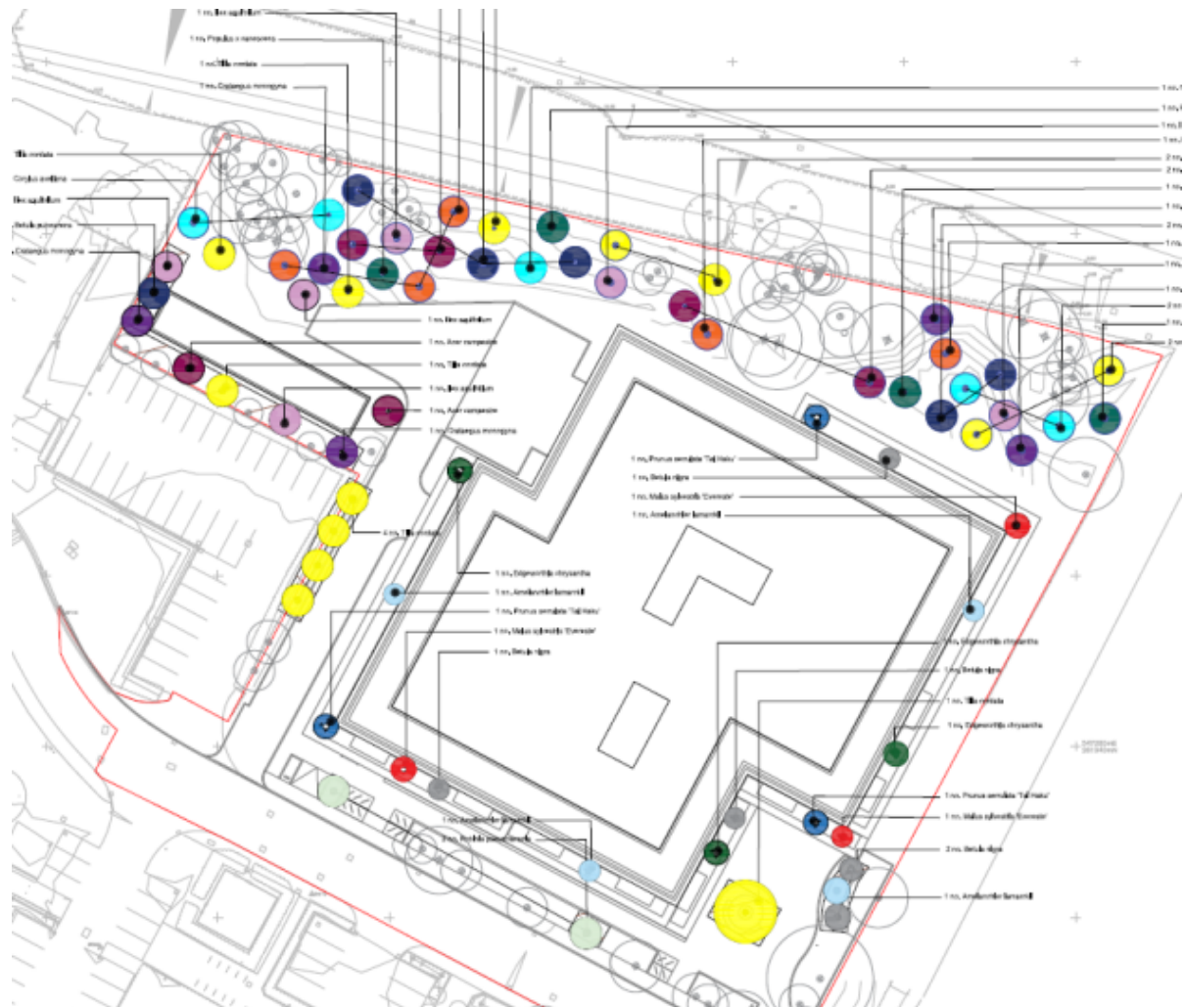
Page 8





# Tree planting plan

Page 9



## ROOF TERRACES

- *Malus sylvestris 'Evoreski'*
- *Prunus serotina 'Tai Haku'*
- *Betula nigra*
- *Edgeworthia chrysantha*
- *Amelanchier lamarckii*

## GROUND FLOOR

- *Betula nigra*
- *Amelanchier lamarckii*
- *Tilia cordata*
- *Crataegus monogyna*
- *Corylus avellana*
- Extent of tree pit
- *Betula pubescens*
- *Acer campestre*
- *Ilex aquifolium*
- *Prunus avium 'Plena'*
- *Populus x canescens*
- *Robinia pseudoacacia*

This page is intentionally left blank